

Client Details

Name: xxxxxx

Address: xxx
 xxx,
 xxxxxx

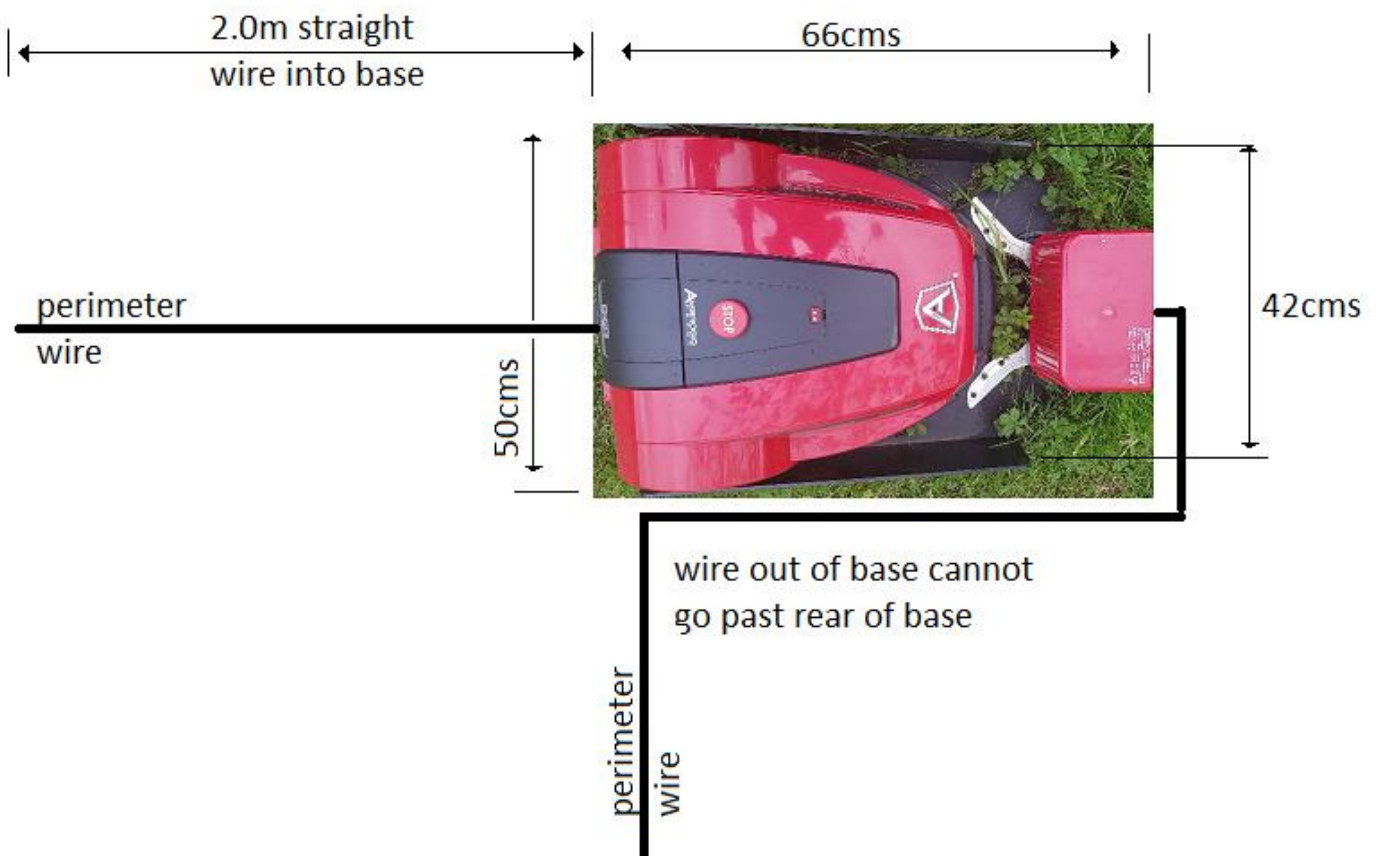
Email:xxxxxx

Tel: xxxxxx

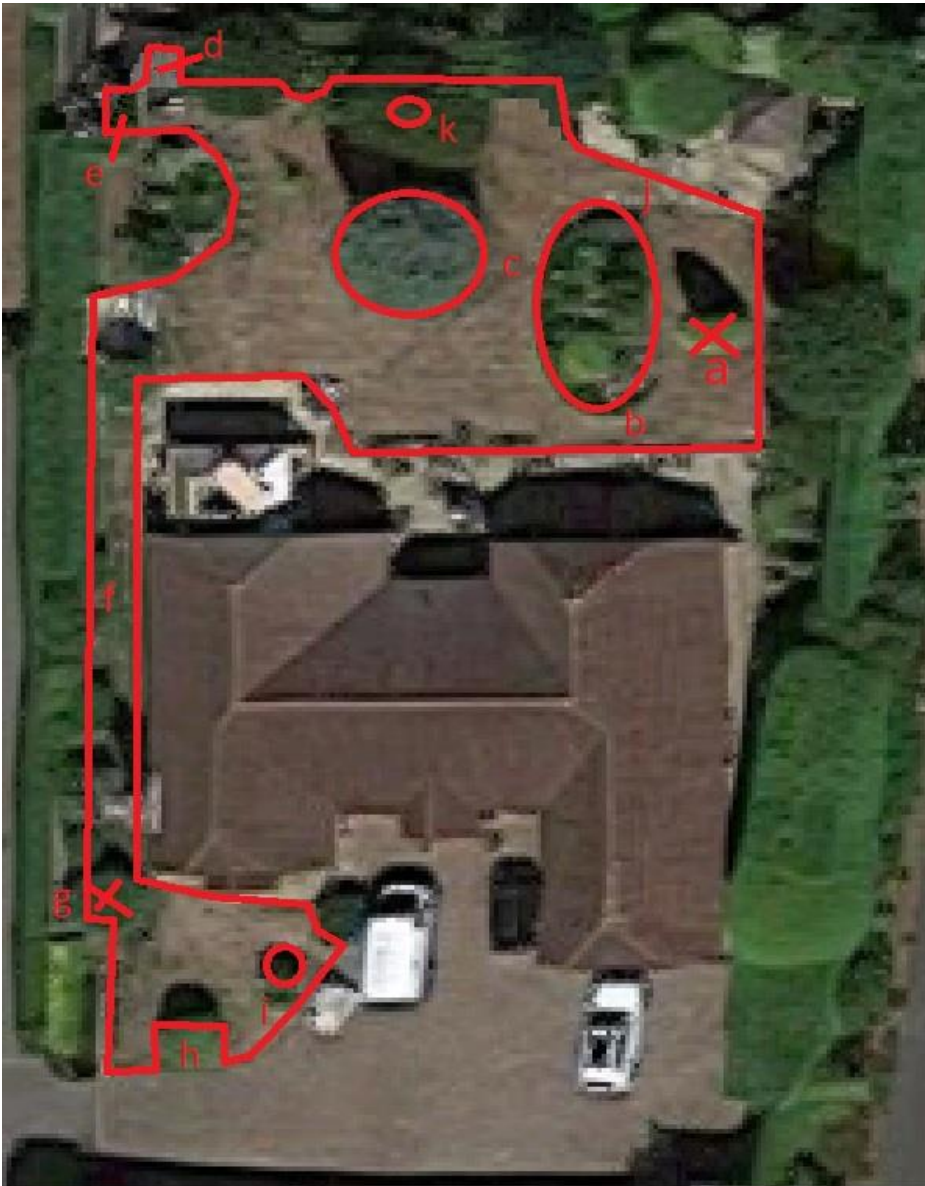
Survey Date: xx July 2019

Fee: £50 (paid)

Base station limitations



Garden Layout



- a - Tree to be removed
- b - 1.3m gap
- c - 2.2m gap
- d - 2.3m x 0.7m (base station)
- e - 1.1m width x 1.3m/ 1.6m
- f - passageway 2.3m wide, 1.3m at narrowest
- g - bush to be removed
- h - wire to go around bed as 0.75m gap at corner
- i - tree ringed
- j - 2m gap
- k - tree does not need ringing, base will be made level with lawn

Tree in back garden (a on garden layout)



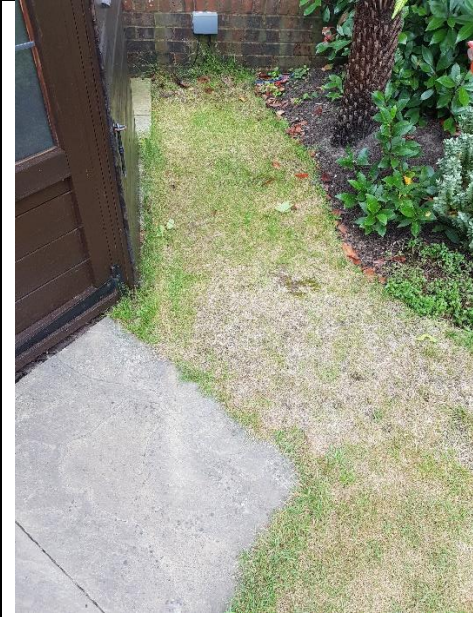
The tree will be removed and laid to grass level with the lawn. This will be setup as a secondary area.


Large flower/ hedge bed (b on garden layout)



The large flower/ hedge bed has 2 'pinch' points (b – 1.3m, j- 2m). b & j should be cut as the mower exits or enters the secondary area (around tree a) as part of normal operation. This may take a few 'tweaks' over time to get the best cut/ coverage.

Base station placement (d on garden layout)



— perimeter wire
 base station

Area d has power as can be seen in the photo and would be the obvious placement for the mower however the mower will not be able to be installed at the end of this area due to the requirement that a 2m straight wire needs to go into the base and that the wire exiting the base cannot go past the base (see base station limitations).

Potential placement of base station but this would leave the corner area uncut.

Passage from rear garden to front garden

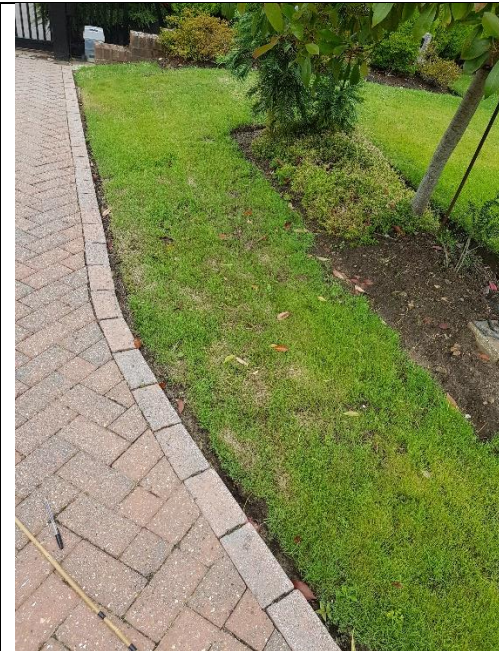
The passage from the rear to front garden varies from 2.3m down to 1.3m at it's narrowest. The edges would be cut as part of an edge cut but the intention is to set this area as a secondary area with 'gates' at each end to stop the robot escaping during normal operation. The robot will bounce around a lot between the wires but given the ability of the L35 to cut a much larger area, it should cater with this area. The introduction on the 'gates' will mean that the grass inside the gates will not be cut but this should only be a 10 – 15 cm strip.

Stepping stones in rear garden



There are a number of 'stepping stones' in the garden but these are fairly level with the lawn so would not be an issue with the mower crossing them.

Front lawn bed (h on garden layout)



The front lawn bed is 0.95 m from the edge of the driveway, this narrows to 0.75m at the corner. We discussed the possibility of running the robot with one wheel on the driveway however there is a small gully running along the driveway which is used for drainage so it was decided to exclude the area between the flower bed and the driveway.

Tree in front garden (i on garden layout)



The tree in the front garden could either be ringed or the base made level with the lawn. If the tree is ringed, the narrow gap between the driveway and tree would mean that the robot will cut it infrequently so it will take a while to reach a consistent height. The edge would still be cut as part of the edge cut.